

Polybit



Reliable Solutions for Professional Results



Henkel

Quality for Professionals



Reliable building partner for professional solutions

Henkel Polybit Industries Ltd. has grown over the past 20 years to one of the leading manufacturers of waterproofing products and construction chemicals in the GCC region, represented with offices in the United Arab Emirates, Kingdom of Saudi Arabia, Qatar, Oman, Bahrain and Kuwait. Together with its own manufacturing facilities in the UAE and Saudi Arabia it is understood to work hand in hand with leading consultants, architects and construction authorities in the GCC region, catering to the varied needs of the construction industry.



Quality worldwide for your professional success.

Starting as a small, family firm, Henkel has grown over the past 130 years into an innovative, customer-driven, and highly successful global company. Today, Henkel, with its leading brands and technologies, makes people's lives easier, better and more beautiful. As many as 53,000 people in 125 countries work for the company in three strategic business sectors: Adhesive Technologies, Laundry/Home Care and Cosmetics/Toiletries. An integral part of Adhesive Technologies is the Henkel Building Systems department which serves the needs of the construction industry and professional craftsmen. Our extensive know-how, highly innovative products based on superior technologies and customized system solutions help not only professional users but all our customers to be more successful and efficient while preserving the Earth's natural resources.

CONTENTS



TORCH ON MEMBRANES

MEMBRANES

Torch on Membranes

AL Hosan - Bituminous roofing felt	5
Bituplus G4140 - Mineral surfaced bituminous waterproofing membrane.....	6
Bituplus P4180 - APP modified bituminous waterproofing membrane.....	7
Plastifelt - Fibre reinforced bituminous waterproofing membrane.....	8
Plastifelt Ultra - Polyester reinforced bituminous waterproofing membrane	9

Self Adhesive Membranes

Bitustick 15 - HDPE surfaced bituminous waterproofing membrane.....	10
---	----

Damp Proof Membranes

Polysield DPC - Bituminous damp proof membrane	11
Polysield DPC HD - Heavy duty bituminous damp proof membrane.....	12

Protection Boards

Bituboard 30/60 - Fibre impregnated asphaltic protection board.....	13
---	----

COATINGS

Bitumen Coatings

Easybit - Bitumen emulsion coating	14
Polycoat - Bitumen emulsion paint.....	15
Polycoat WB - Bitumen emulsion paint.....	16
Polycoat RBE 5 - Rubberized bitumen emulsion	17
Polycoat RBE 10 - Rubberized bitumen emulsion	18
Polycoat RBE15 -Rubberized bitumen emulsion	19
Polyasphalt 60/70 - Penetration grade bitumen coating	20

Acrylic Coatings

Polyflex - Acrylic modified cementitious waterproofing coating	21
Polytherm AC - Highly efficient, energy-saving flexible coating	22
Polytex 10 - Elastomeric acrylic waterproofing coating	23
Polythane P10 - Liquid applied waterproofing and protective coating	24

Bitumen Primers

Bituprime SB - Solvent based bitumen primer	25
---	----

SEALANTS

Sealants

Bitumastic - Bitumen rubber mastic sealant	26
Polyseal PS GG - 2 part gun grade polysulphide joint sealant.....	27
Polyseal PS PG - 2 part pouring grade polysulphide joint sealant	28
Polyseal 1 PU - One part polyurethane joint sealant	29
Polymastic - Acrylic co-polymer mastic sealant	30

CONCRETE REPAIR

Concrete Repair & Bonding Agents

Polyrepair LW35 - Lightweight concrete repair mortar	31
Polyrepair ST50 - High strength cementitious repair mortar.....	32
Polyfiller - Permanent repair filler for plaster, brick, stone and wood.....	33
Polyrelease - Chemical mould release oil.....	34
Polypoxy NF - Epoxy repair putty and bedding mortar	35
Rushbond PVA - Polyvinyl acetate based bonding agent	36
Polybond SBR - SBR based bonding agent and admixture.....	37

TILING

Tile Adhesives

CM9 - Tile adhesive for indoor areas	38
CM11 - Tile adhesive for indoor and outdoor areas	39
CM16 - Flexible tile adhesive for indoor and outdoor areas	40

Joint Grouts

CE 33 - Cement-based joint mortar for 1 to 8mm.....	41
CE 47 - Epoxy joint filler for chemical resistant grouting.....	42

AUXILIARY PRODUCTS

Pattex CF 1000 - Epoxy resin chemical anchoring system	43
Polystop CJ - Internal and external PVC construction joints	44



AL HOSAN

Bituminous roofing felt



AL Hosan is a bituminous based roofing felt, which is used as a waterproofing underlay below roofing shingles. The membrane application is fast and easy and can also be applied over a layer of hot poured asphalt.

Area of Application

- Sloped roofs
- Below roof shingles

Technical Data

Thickness, [mm]	1
Dimension, [m]	1 x 15 1 x 20
Weight/roll, [kg]	
15m roll	12
20m roll	13

Coverage

Membrane	15m roll is 15m ² 20m roll is 20m ²
----------	--

Pack	Unit	Unit/Pallet
15mx1mx1.2mm	Roll	50
20mx1mx1.2mm	Roll	70

Storage

Store on pallets and keep covered in a cool, shaded & dry place. Do not stack.

Shelf Life

12 months

Images used are for illustration purpose only



BITUPLUS G4140

Mineral surfaced bituminous waterproofing membrane



Bituplus G 4140 is a high performance polymer modified bituminous waterproofing membrane, surfaced with reflective natural color slates to provide maximum protection against UV. The presence of the slates provides a mechanical protection against light foot traffic and occasional maintenance as well as offering an aesthetic surface. It is an ideal membrane for roofing and exposed applications where it can be placed on top of the existing surface and providing an economical and efficient solution to leaking roofs.

Area of Application

- Inverted roofs & parapets
- Terraces, balconies & patios
- Flashing on upstands

Technical Data

Thickness, [mm]	3.0/4.0
Dimension, [m]	1 x 10
Weight/roll, [kg]	46
Reinforcement, [g/m ²] [Polyester]	140

Coverage

Membrane	1 roll is 10m ²
Primer	2L/roll

Pack Unit Unit/Pallet

10mx1 mx4mm	Roll	23
-------------	------	----

Storage

Store on pallets and keep covered in a cool, shaded & dry place. Do not stack.

Shelf Life

12 months



Images used are for illustration purpose only



Heat Resistant



BITUPLUS P4180

APP modified bituminous waterproofing membrane



Images used are for illustration purpose only

Bituplus P 4180 membrane is a plastomeric waterproofing membrane, manufactured from a rich mixture of bitumen and selected APP (Atactic polypropylene) polymers blended together to obtain excellent heat & UV resistance and waterproofing properties. The polymerized bitumen is coated on to a dimensionally stable reinforcement core of non woven spun bond polyester rot-proof fabric.

Area of Application

- Inverted roofs & parapets
- Terraces, balconies & patios

Technical Data

Thickness, [mm]	4.0
Dimension, [m]	1 x 10
Weight/roll, [kg]	40
Reinforcement, [g/m ²] [Polyester]	180

Coverage

Membrane:	1 roll is 10m ²
Primer:	2L/roll

Pack Unit Unit/Pallet

10mx1 mx4mm	roll	20
-------------	------	----

Storage

Store on pallets and keep covered in a cool, shaded & dry place. Do not stack.

Shelf Life

12 months

MADE IN KSA



PLASTIFELT

Fibre reinforced bituminous waterproofing membrane

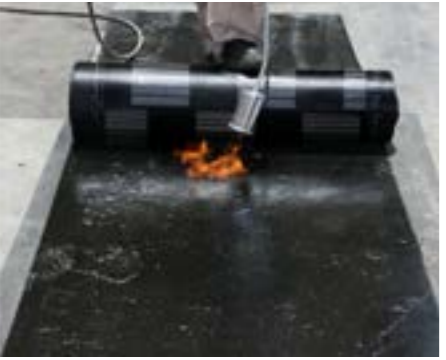
Non Tearable



PLASTIFELT ULTRA

Polyester reinforced bituminous waterproofing membrane

Images used are for illustration purpose only



Plastifelt is a fibre reinforced torch applied bituminous water proofing membrane, manufactured using a blend of high quality bitumen and selected polymers. The membrane is designed to provide resistance to the penetration of water in high temperature and tropical climatic regions.

Area of Application

- Roofs
- Terraces
- Balconies

Technical Data

Thickness, [mm]	3 & 4
Dimension, [m]	1 x 10
Weight/roll, [kg]	30, 40
Reinforcement, gsm [fibre]	50

Coverage

Membrane:	1 roll is 10m ²
Primer:	2L/roll

Pack	Unit	Unit/Pallet
10mx1mx3mm	roll	30
10mx1mx4mm	roll	23

Storage

Store on pallets and keep covered in a cool, shaded & dry place. Do not stack.

Shelf Life

12 months



Images used are for illustration purpose only



Plastifelt Ultra is a polymer modified bituminous waterproofing membrane, manufactured from a mixture of bitumen and selected polymers, which are blended together to obtain good waterproofing properties. The bitumen compound also exhibits high heat and UV resistance properties. The polymerized bitumen is coated on to a dimensionally stable reinforcement polyester..

Area of Application

- Inverted roofs & parapets
- Terraces, balconies & patios
- Sunken slabs

Technical Data

Thickness, [mm]	4.0
Dimension, [m]	1 x 10
Weight/roll, [kg]	40
Reinforcement, [g/m ²] [Polyester]	120

Coverage

Membrane:	1 roll is 10m ²
Primer:	2L/roll

Pack	Unit	Unit/Pallet
10mx1mx4mm	roll	23

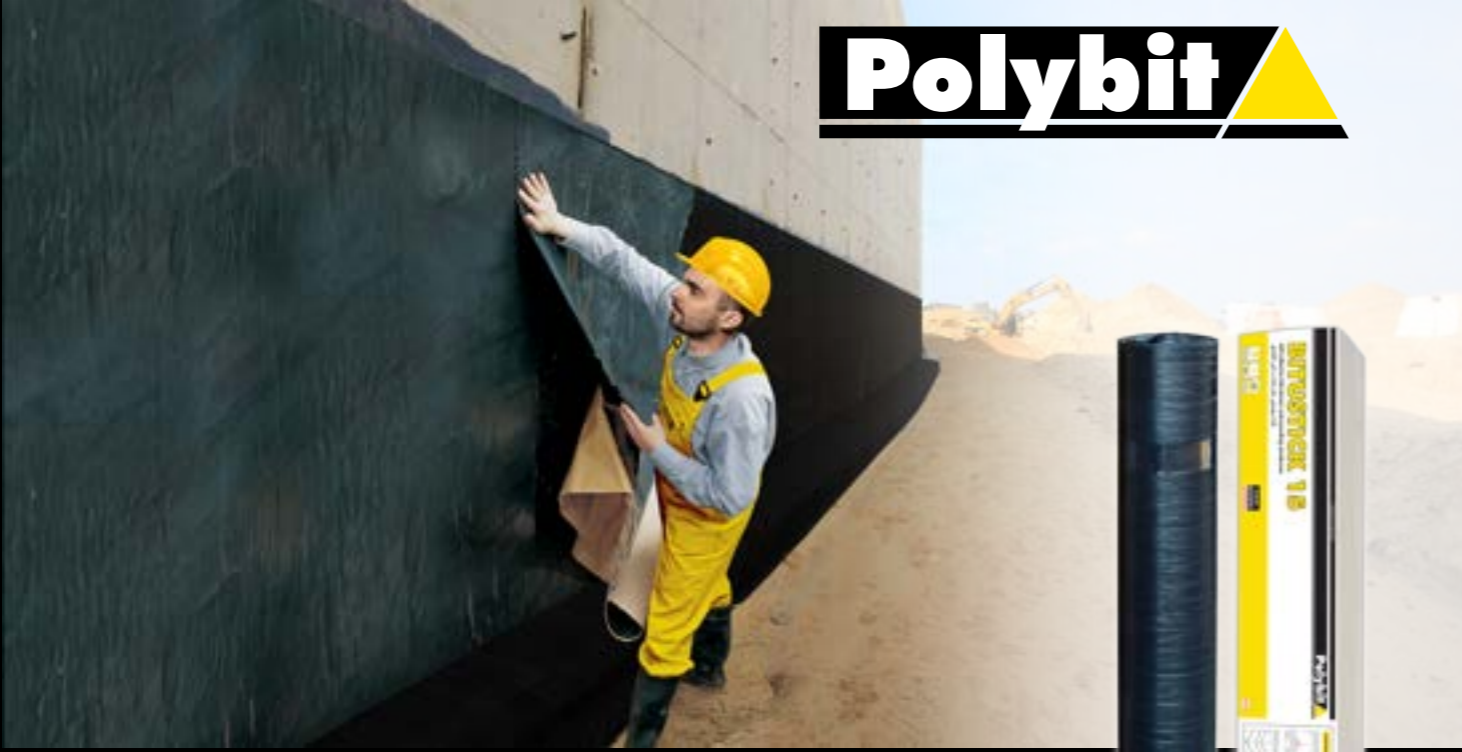
Storage

Store on pallets and keep covered in a cool, shaded & dry place. Do not stack.

Shelf Life

12 months





BITUSTICK 15

HDPE surfaced bituminous waterproofing membrane



Bitustick 15 is a high performance 1.5mm thick preformed Self adhesive SBS rubber modified bituminous waterproofing membrane for waterproofing of below ground concrete structures. Complies to BS 8102 standard requirements.

Area of Application

- Concrete foundations & basements
- Footings of villas, houses & buildings

Technical Data

Thickness, [mm]	1.5
Roll dimension [m]	1 x 10
Weight/roll, [kg]	16

Coverage

Membrane:	1 roll is 10m ²
Primer:	2L/roll

Pack	Unit	Unit/Pallet
------	------	-------------

10mx1mx1.5mm	roll	54
--------------	------	----

Storage

Store on pallets and keep covered in a cool, shaded & dry place.

Shelf Life

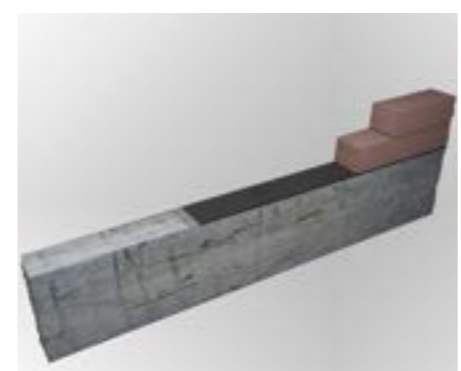
12 months

Images used are for illustration purpose only



POLYSHIELD DPC

Bituminous damp proof membrane



Polyshield DPC is an economical grade of bituminous damp proof membrane, designed to prevent the migration of moisture from the ground to the building.

Area of Application

- Damp proof course below block work

Technical Data

Thickness, [mm]	1.5
Mass/unit area, [kg/m ²]	1.5 - 1.8

Pack	Unit/Crt	Unit/Pallet
------	----------	-------------

10mx100mmx1.5mm	10 roll	350
10mx150mmx1.5mm	6 roll	210
10mx200mmx1.5mm	5 roll	175
10mx250mmx1.5mm	4 roll	140

Storage

Store on pallets and keep covered in a cool, shaded & dry place.

Shelf Life

12 months

Images used are for illustration purpose only

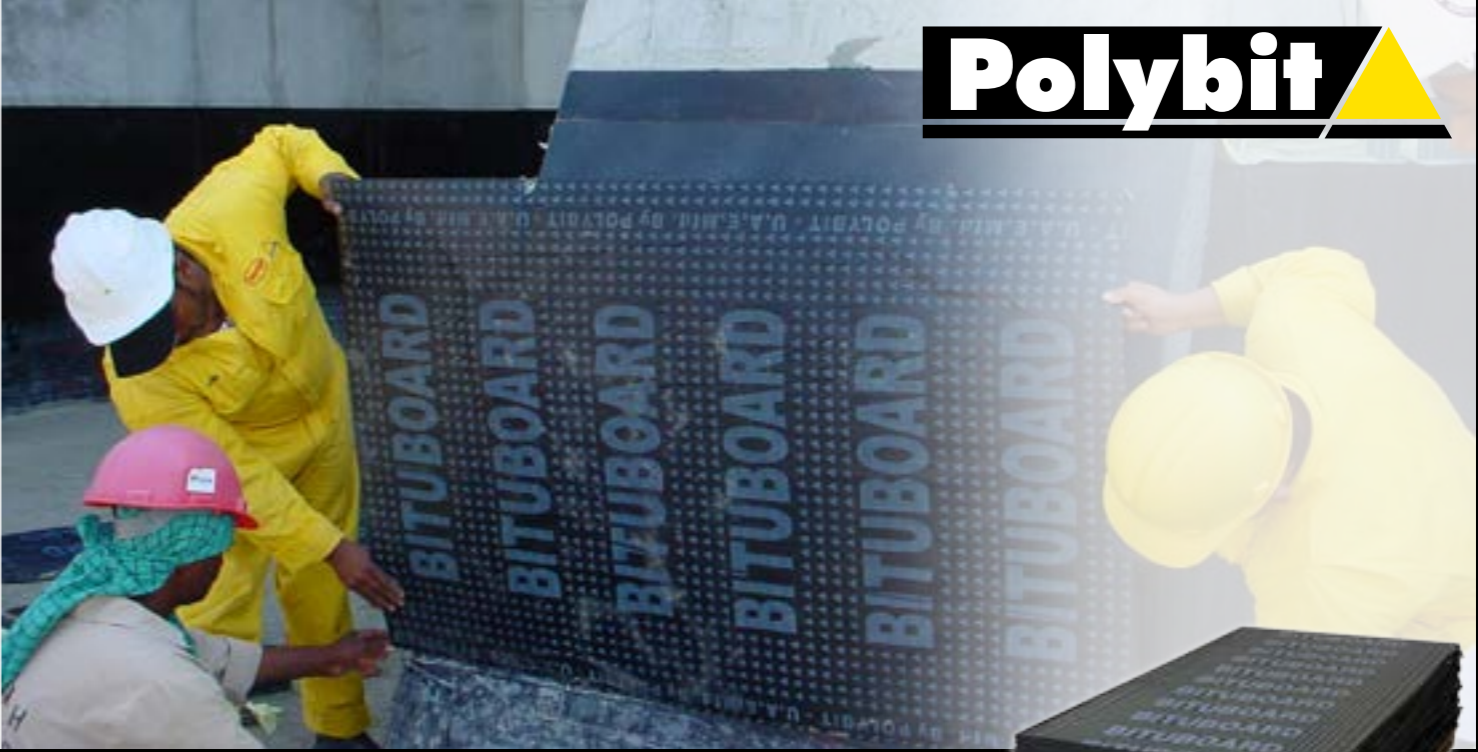


Heavy Duty



POLYSHIELD DPC HD

Heavy duty bituminous damp proof membrane



BITUBOARD 30/60

Fibre impregnated asphaltic protection board



Polyshield DPC HD is a fibre reinforced superior grade bituminous damp proof membrane, designed to prevent the migration of moisture from the ground to the building. Complies to BS 6398 standard requirements.

Area of Application

- Damp proof course below block work

Technical Data

Thickness, [mm] 3
 Mass/unit area, [kg/m²] 3.1 - 3.3

Pack	Unit/Crt	Unit/Pallet
10mx100mmx3mm	10 roll	200
10mx150mmx3mm	6 roll	120
10mx200mmx3mm	5 roll	100
10mx250mmx3mm	4 roll	80
10mx300mmx3mm	3 roll	60

Storage

Store on pallets and keep covered in a cool, shaded & dry place.

Shelf Life

12 months



Images used are for illustration purpose only



Bituboard is a multi layer, asphaltic protection board. It is manufactured by thermally bonding polymer modified bitumen with selected additives which is then sandwiched between a layer of saturated fibre-glass on one side and anti-stick polyethylene liner on the other.

Area of Application

- Foundations
- Below ground structures

Technical Data

Thickness, [mm] 3 & 6
 Mass per unit area [kg/m²] 3.7 - 3.9 & 7.0 - 7.2

Pack	Unit	Unit/Pallet
2mx1mx3.2mm	Sheet	200
2mx1mx6mm	Sheet	100

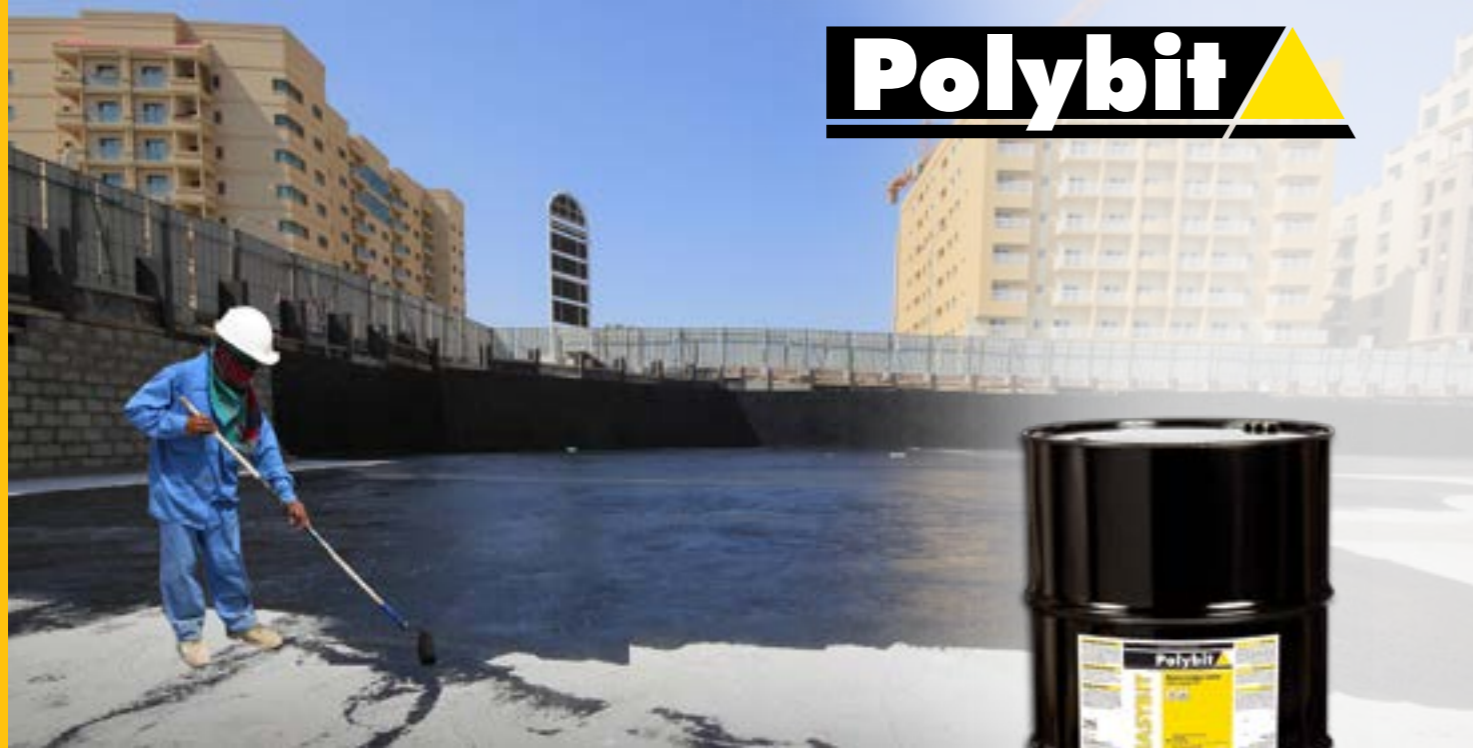
Storage

Store on pallets and keep covered in a cool, shaded & dry place.

Shelf Life

12 months

Images used are for illustration purpose only



EASYBIT

Bitumen emulsion coating



Thixotropic

POLYCOAT

Bitumen emulsion paint



Easybit is an economical grade of non ionic based bitumen emulsion coating. The coating is manufactured by blending fillers with the bitumen. The coating is applied directly from the drum and does not require any heating.

Area of Application

- Footings & concrete foundations
- Blockwork

Technical Data

Form	Viscous liquid
Color	Dark brown
Tack free time [hrs]	2
Final set [hrs]	24

Coverage

4m²/L/coat to achieve a thickness of 125microns (0.125mm)

Pack Unit Unit/Pallet

140kg	Drum	4
-------	------	---

Storage

Store on pallets and keep covered in a cool, shaded & dry place.

Shelf Life

12 months



Images used are for illustration purpose only



Polycoat is a non ionic based bitumen emulsion coating. The coating is manufactured by blending high quality bentonite fillers with the bitumen to produce a thixotropic coating so that it can be applied easily on vertical surfaces with out sagging. The coating after curing forms a tough membrane which provides a strong damp proof barrier on the concrete surface.

Area of Application

- Footings & concrete foundations
- Blockwork

Technical Data

Form	Thick viscous liquid
Color	Dark brown
Tack free time [hrs]	2
Final set [hrs]	24

Coverage

4m²/L/coat to achieve a thickness of 125microns [0.125mm]

Pack Unit Unit/Pallet

15L	Pail	36
-----	------	----

Storage

Store on pallets and keep covered in a cool, shaded & dry place.

Shelf Life

12 months



Images used are for illustration purpose only



POLYCOAT WB

Bitumen emulsion paint



POLYCOAT RBE 5

Rubberized bitumen emulsion



Polycoat WB is a non ionic based bitumen emulsion coating. The coating is manufactured by blending high quality bentonite fillers with the bitumen to produce a thixotropic coating so that it can be applied easily on vertical surfaces with out sagging. The coating after curing forms a tough membrane which provides a strong damp proof barrier on the concrete surface.

Area of Application

- Footings & concrete foundations
- Blockwork

Technical Data

Form	Thick viscous liquid
Color	Dark brown
Tack free time [hrs]	2
Final set [hrs]	24

Coverage

4m²/L/coat to achieve a thickness of 125microns [0.125mm]

Pack Unit Unit/Pallet

200L	Drum	4
------	------	---

Storage

Store on pallets and keep covered in a cool, shaded & dry place.

Shelf Life

12 months

Images used are for illustration purpose only



Polycoat RBE 5 is rubber modified bitumen emulsion coating, which dries to form a tough, seamless, flexible vapor proof protective coating.

Area of Application

- Footings & concrete foundations
- Blockwork

Technical Data

Form	Thixotropic viscous liquid
Color	Dark brown
Flash point	Non-flammable
Rubber content, [%]	3

Coverage

Approx. : 4m²/L/coat: 0.1 mm DFT

Pack Unit Unit/Pallet

200L	Drum	4
------	------	---

Storage

Store on pallets and covered in a cool, shaded & dry place.

Shelf Life

12 months

Images used are for illustration purpose only



Rubber Emulsion



POLYCOAT RBE 10

Rubberized bitumen emulsion



POLYCOAT RBE 15

Rubberized bitumen emulsion



Polycoat RBE10 is a non ionic based rubberized bitumen emulsion coating. The coating is manufactured by blending high quality bentonite fillers with bitumen and rubber to produce a tough and high quality coating for waterproofing and damproofing of concrete structures.

Area of Application

- Footings & concrete foundations
- Blockwork

Technical Data

Form	Thixotropic viscous liquid
Color	Dark brown
Tack free time [hrs]	2
Final set [hrs]	24

Coverage

4m²/L/coat to achieve a thickness of 125microns (0.125mm)

Pack	Unit	Unit/Pallet
20L	Pail	36
200L	Drum	4

Storage

Store on pallets and keep covered in a cool, shaded & dry place.

Shelf Life

12 months



Images used are for illustration purpose only



Polycoat RBE 15 is an emulsified bituminous coating modified with 10% styrene butadiene styrene rubber, which dries to form a tough, seamless, flexible water and vapor proof protective coating.

Area of Application

- Waterproofing & protective coating on concrete foundations
- As a curing compound on freshly cast concrete structures

Technical Data

Form	Thixotropic viscous liquid
Color	Dark brown
Flash point	Non-flammable
Elongation, [%]	> 500

Coverage

General use: 1 - 2m²/L/coat

Pack	Unit	Unit/Pallet
20L	Pail	36

Storage

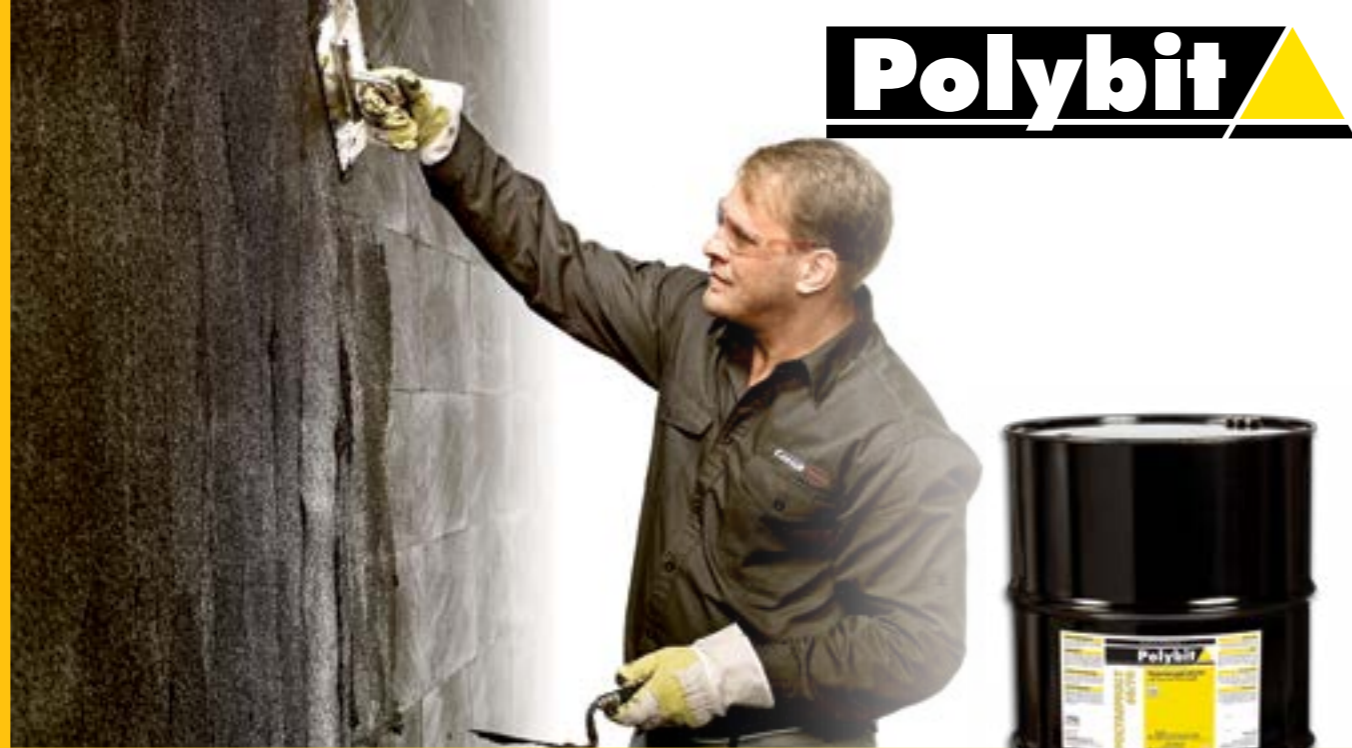
Store on pallets and keep covered in a cool, shaded & dry place.

Shelf Life

12 months



Images used are for illustration purpose only



POLYASPHALT 60/70

Penetration grade bitumen coating



Non Toxic

POLYFLEX

Acrylic modified cementitious waterproofing coating



Polyasphalt 60/70 is a penetration grade bitumen used as a paving grade bitumen used for the construction of roads and asphalt pavements. This is also used as a protective and waterproofing coating on concrete surfaces.

Area of Application

- Waterproofing below ground block work, concrete structures prior to back filling
- Road construction and maintenance of flexible pavements

Technical Data

Form	Thick viscous liquid
Color	Dark brown
Tack free time [hrs]	2
Final set [hrs]	24

Pack	Unit	Unit/Pallet
140kg	Drum	4

Storage

Store on pallets and keep covered in a cool, shaded & dry place.

Shelf Life

12 months



Images used are for illustration purpose only



Polyflex is a strong acrylic modified cementitious waterproofing and concrete protective coating for water retaining areas. The coating is highly flexible with a superior crack bridging ability.

Area of Application

- Bathrooms, toilets, showers
- Kitchens, balconies, terraces
- Swimming pools
- Drinking water tanks

Technical Data

Colour	Grey/white
Density, [g/cc]	1.8
Application time, [mins]	45
Tensile strength [N/mm ²]	>8
Application thickness, [mm]	2
Drying time, [hrs]	2-3
Full cure, [days]	7

Coverage

1.8kg/m²/coat for 1mm thickness (2 coats required)

Pack	Unit	Unit/Pallet
Part A: 15kg	Bag	100
Part B: 5L	Jerry can	120

Storage

Store on pallets and keep covered in a cool, shaded & dry place.

Shelf Life

12 months



Images used are for illustration purpose only



Cool Roof Technology



POLYTHERM AC

Highly efficient, energy-saving flexible coating



Polytherm AC is a water-based pure acrylic resin providing efficient thermal protection for the entire structure. Polytherm AC is non-toxic, washable & environment friendly forming a seamless membrane that resists many harsh chemicals & bridges hairline cracks. Polytherm AC has high emittance & reflectance as well as a very low conductivity value which reduces thermal shock & heat penetration thereby keeping roofs much cooler in hot summer weather. They offer UV protection & display excellent dirt pick-up resistance and retain their flexibility long after aging.

Area of Application

- Roofs, terraces, balconies, domes, etc.
- Sandwich panels, corrugated sheets
- Concrete facades

Technical Data

Elongation [%]	>200
Emissivity, [%]	90

Coverage

Concrete roof	0.83L/m ² for 500μ DFT
Metal roof	0.67L/m ² for 400μ DFT

Pack	Unit	Unit/Pallet
20L	pail	36

Storage

Store on pallets and keep covered in a cool, shaded & dry place. Do not stack.

Shelf Life

12 months

Images used are for illustration purpose only



POLYTEX 10

Elastomeric acrylic waterproofing coating



Polytex 10 is a single component, elastomeric, acrylic waterproofing and protective coating. Polytex 10 upon curing forms a tough, flexible and durable coating which is resistant to UV and other weathering agents. Polytex 10 is also used to protect exposed concrete structures against carbonation and chloride ion diffusion.

Area of Application

- Sloped concrete roofs, metal profile roofs & asbestos roofs
- Anti carbonation coating in car park decks

Technical Data

Color	White/grey
Crack bridging ability, [mm]	> 0.5
Application temp, [°C]	5 to 45

Coverage

1L /m²/ coat for 0.5mm Dry Film Thickness. Two coats will give a combined thickness of 1.0mm thickness.

Pack	Unit	Unit/Pallet
20L	pail	36

Storage

Store on pallets and keep covered in a cool, shaded & dry place. Do not stack.

Shelf Life

12 months

Images used are for illustration purpose only



POLYTHANE P10

Liquid applied waterproofing and protective coating



BITUPRIME SB

Solvent based bitumen primer



Polythane P10 is a liquid applied waterproofing and protective coating for concrete structures based on hybrid Polyurethane. The Polyurethane is modified with specially selected polymers to form a tough, flexible and durable coating. It is completely free from coal tar and other hazardous ingredients.

Area of Application

- Waterproofing of wet areas like bathrooms, toilets, public showers & kitchens
- Waterproofing of roofs, terraces, balconies, domes, aluminium sandwich panels and corrugated sheets

Technical Data

Color Grey/white/black
Form Viscous liquid

Coverage

1.4L/m² for 800 microns DFT in 2 coats

Pack	Unit	Unit/Pallet
20L	pail	36

Storage

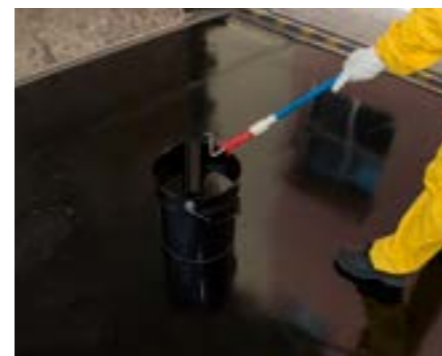
Store on pallets and keep covered in a cool, shaded & dry place. Do not stack.

Shelf Life

12 months



Images used are for illustration purpose only



Bituprime SB is a high quality solvent based fast drying bitumen primer which provides a superior adhesion of waterproofing membranes and coating with the concrete surface.

Area of Application

- Concrete foundations
- Basements
- Footings

Technical Data

Color Dark brown
Form Viscous liquid
Density, [g/cc] 0.85 - 0.90
Drying time, [hrs] 2-3

Coverage

4 - 6m²/L

Pack	Unit	Unit/Pallet
20L	Pail	36
200L	Drum	4

Storage

Store on pallets and keep covered in a cool, shaded & dry place. Inflammable material. Keep away from sources of ignition.

Shelf Life

12 months



Images used are for illustration purpose only



Polybit

Rubber Inside



BITUMASTIC

Bitumen rubber mastic sealant



Polybit



POLYSEAL PS GG

2 part gun grade polysulphide joint sealant



Bitumastic is a bitumen based mastic sealant which is modified with SBS rubber for superior performance and high durability. Used for sealing and tucking in roof waterproofing membranes in grooves. Complies to BS 5212

Area of Application

- Sealing of membranes grooves on parapets
- Pointing in brickworks

Technical Data

Colour	Brown black
Form	Thixotropic paste
Density, [g/cc]	1.1
Setting time, [hrs]	24

Coverage

36m/20kg pail for a joint size of 20mm x 20mm

Pack	Unit	Unit/Pallet
20kg	Pail	36

Storage

Store on pallets and keep covered in a cool, shaded & dry place.

Shelf Life

12 months



Polyseal PS GG is a non slumping chemically curing polysulphide joint sealant for moderate movement and control joints and is suitable for use in both vertical and horizontal applications.

Area of Application

- Bridge decks and highway pavements
- Water treatment structures
- Airport runways and apron pavements
- Metal & concrete sea walls
- Sealing of roofing flashing penetrations & terminations

Technical Data

Colour	Grey
Consistency	Thixotropic paste
Density, [g/cc]	1.55±0.05
Adhesion to concrete, [N]	>25
Full cure, [days]	7

Coverage

Length of joints in meters filled per 1L of Polyseal PS GG

Pack	Unit	Unit/Pallet
2.5L/kit	Pail	150

Storage

Store in a cool, dry place and keep away from all sources of heat and sunlight. In tropical climates, store in air condition rooms.

Shelf Life

12 months

Images used are for illustration purpose only

Images used are for illustration purpose only

Polybit



POLYSEAL PS PG

2 part pouring grade polysulphide joint sealant

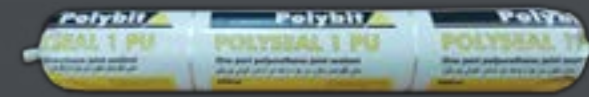


Polybit



POLYSEAL 1 PU

One part polyurethane joint sealant



Polyseal PS PG is a pourable grade polysulphide joint sealant for moderate movement and control joints in horizontal areas and can be used on slope gradients upto 10%.

Area of Application

- Structural floor joints
- Airport runways and apron pavements
- Industrial warehouses
- Garages & workshops

Technical Data

Colour	Grey
Consistency	Free flowing
Density, [g/cc]	1.35±0.05
Setting time, [hrs]	24

Coverage

36m/20kg pail for a joint size of 20mm x 20mm

Pack Unit Unit/Pallet

4L/kit	Pail	120
--------	------	-----

Storage

Store on pallets and keep covered in a cool, shaded & dry place.

Shelf Life

12 months



Polyseal 1 PU is a one part low modulus high performance polyurethane sealant, which cures on absorption of atmospheric moisture to form a firm and flexible rubber watertight seal for moderate movement and control joints. Polyseal 1 PU can be used in both horizontal and vertical applications. The sealant has a Movement Accomodation Factor (MAF) of ±25%.

Area of Application

- Concrete expansion & contraction joints
- Precast concrete & brick cladding
- Perimeter caulking (windows, doors, aluminium frames)
- Structural glazing & curtain wall joints
- Parapet walls

Technical Data

Colour	Grey
Consistency	Thixotropic paste
Density, [g/cc]	1.55±0.05
Adhesion to concrete, [N]	>25
Full cure, [days]	7

Coverage

Length of joints in meters filled per 600 ml sausage of Polyseal 1PU

Pack Unit Unit/Pallet

Sausage	Sealants	800
---------	----------	-----

Storage

Store in a cool, dry place and keep away from all sources of heat and sunlight.

Shelf Life

Up to 6 months in un-opened conditions and if stored as per recommendations.



POLYMASTIC

Acrylic co-polymer mastic sealant



Polymastic is a single component acrylic polymer based mastic sealant. This is used for pointing applications and filling of gaps in between cement tiles and joints. Complies to BS 5212

Area of Application

- General purpose chaulking
- Gaps in plasterboards/gypsum boards
- Joints between cement tiles
- Perimeter sealing in doors & windows

Technical Data

Colour	Grey/white
Form	Thixotropic paste
Density, [g/cc]	1.5
Setting time, [mins]	60
Full cure, [days]	7

Coverage

150m/25kg pail for a joint size of 10mm x 10mm

Pack	Unit	Unit/Pallet
25kg	Pail	36

Storage

Store on pallets and keep covered in a cool, shaded & dry place.

Shelf Life

12 months



Images used are for illustration purpose only



Light Weight

POLYREPAIR LW35

Lightweight concrete repair mortar



Images used are for illustration purpose only

Polyrepair LW35 is a high quality cementitious repair mortar manufactured using lightweight fillers for repairing of spalls in concrete for overhead applications.

Area of Application

- Repair of soffits & concrete ceilings
- Non structural elements

Technical Data

Form	Grey cementitious powder
Density, [g/cc]	1.85
Application time, [mins]	30
Compressive strength, [N/mm ²]	>40
Application thickness	
Minimum, [mm/layer]	5
Vertical, [mm/layer]	Up to 50
Overhead, [mm/layer]	Up to 25

Coverage

1m²/25 kg for 16mm thickness

Pack	Unit	Unit/Pallet
25kg	Bags	50

Storage

Store on pallets and keep covered in a cool, shaded & dry place.

Shelf Life

12 months



High Strength



POLYREPAIR ST50

High strength cementitious repair mortar



POLYFILLER

Permanent repair filler for plaster, brick, stone and wood



Polyrepair ST50 is a high strength cementitious repair mortar manufactured using high quality shrinkage compensating polymers for repairing of damaged concrete structures.

Area of Application

- Beams, columns
- Honeycomb concrete

Technical Data

Form	Grey cementitious powder
Density, [g/cc]	2.1
Application time, [mins]	30
Compressive strength, [N/mm ²]	>50
Application thickness	
Minimum, [mm/layer]	5
Vertical, [mm/layer]	Up to 40
Overhead, [mm/layer]	Up to 15

Coverage

1m²/25kg for 14mm thickness

Pack	Unit	Unit/Pallet
25kg	Bags	50

Storage

Store on pallets and keep covered in a cool, shaded & dry place.

Shelf Life

12 months

Images used are for illustration purpose only



Polyfiller is an economical grade crack filling compound. This is used for the repair and sealing of minor cracks and potholes in plaster or renders.

Area of Application

- Repair of cracks in plaster and render

Technical Data

Form	White powder
Application time, [mins]	90
Setting time, [hrs]	3

Pack	Unit	Unit/Pallet
1.5kg x 8nos	Carton	48

Storage

Store on pallets and keep covered in a cool, shaded & dry place.

Shelf Life

12 months

Images used are for illustration purpose only



POLYRELEASE

Chemical mould release oil



POLYPOXY NF

Epoxy repair putty and bedding mortar



Polyrelease is a modified oil based shuttering oil. Application of this release oil on shutters ensures a smooth fair finish on the concrete surface after the removal of shutters.

Area of Application

- Shutters, formworks prior to concreting
- Moulds of precast concrete

Technical Data

Colour Amber
Specific gravity @20°C 0.8 ± 0.05

Coverage

Wooden shutters: 30 m²/L
Metal shutter: 70m²/L

Pack	Unit	Unit/Pallet
20L	Pail	36

Storage

Store on pallets and keep covered in a cool, shaded & dry place.

Shelf Life

12 months



Images used are for illustration purpose only



PolyPOXY NF is an easy to use non-flowing, sand filled two component epoxy compound which can be used for bedding, gap filling, repair and adhesive applications.

Area of Application

- Repairing damaged concrete & filling of cracks
- As a putty prior to application of floor coatings and screeds
- Can be used to join pre cast concrete / GRC structures
- Fixing tiles on heavy duty areas, bedding bridge beams or bearing
- Anchoring bolts and filling bolt pockets
- As a bonding agent for almost all rigid surfaces

Technical Data

Colour Grey/off white paste
Density, [g/cc] 1.85±0.05

Coverage

3kg kit will cover 1.67m² at 1mm thickness.

Pack	Unit	Unit/Pallet
3L/kit	Can	150

Storage

Store in a cool, dry place and keep away from all sources of heat and sunlight. In tropical climates, store in air condition rooms.

Shelf Life

12 months



Images used are for illustration purpose only



RUSHBOND PVA

Polyvinyl acetate based bonding agent



POLYBOND SBR

SBR based bonding agent and admixture



Rushbond PVA is an economical bonding agent for plasters and renders based on polyvinyl acetate. When applied on to the concrete surface the coating greatly improves the adhesion of the cementitious based plaster or render with the concrete.

Area of Application

- Concrete walls
- Blockwork

Technical Data

Form White viscous liquid
Density, [g/cc] 1.05

Coverage

Neat 1L/10m²
Dilute with water
1:1 1L/20m²
1:3 1L/35m²

Pack	Unit	Unit/Pallet
5kg	Jerry can	120
20kg	Pail	36
200kg	Drum	4

Storage

Store on pallets and keep covered in a cool, shaded & dry place.

Shelf Life

12 months

Images used are for illustration purpose only



Polybond SBR is a superior grade of bonding agent based on Styrene Butadiene Rubber latex based emulsion. The product is designed to provide superior adhesion between old to new concrete or cementitious renders. It is also used as an admixture to improve the performance.

Area of Application

- Bonding old to new concrete
- Bonding agent for renders and plasters
- Waterproofing slurries

Technical Data

Form White/milky liquid
Density, [g/cc] 1.01

Coverage

10L/50kg of cement

Pack	Unit	Unit/Pallet
5L	Jerry can	120
20L	Pail	36

Storage

Store on pallets and keep covered in a cool, shaded & dry place.

Shelf Life

12 months

Images used are for illustration purpose only



Polybit



CM 9

Tile adhesive for indoor areas

Polybit



CM 11

Tile adhesive for indoor and outdoor areas



CM 9 is a tile adhesive for fixing of ceramic tile, porcelain tiles and mosaic tile in indoor area. This can be used for floor and wall both surface.

Area of Application

- Wet areas (with periodic water penetration) e.g. bathrooms, kitchens, toilets
- Utility rooms as cellars, storerooms, drying rooms, corridors, stairs, anterooms, living rooms

Technical Data

Color	Grey/white
Bulk density, [g/cc]	Approx. 1.6
Open time, [mins]	Approx 10
Mixing proportion	6 to 7L water per 25kg

Coverage

1.8kg - 4.9kg for even substrates [consumption can vary depending on the evenness on the substrate, trowel notch depth and the type of tiles]

Pack	Unit	Unit/Pallet
Grey 25kg	bag	48
White 20kg	bag	50

Storage

Store on pallets and keep covered in a cool, shaded & dry place.

Shelf Life

12 months



Images used are for illustration purpose only



CM 11 is a flexible tile adhesive for fixing of ceramic tile, vitrified tile, porcelain tile, mosaic tiles and natural stone in indoor and outdoor floor areas. It is also suitable for wet areas like bathrooms, kitchen and toilets

Area of Application

- Wet areas (with periodic water penetration) e.g. bathrooms, kitchens, toilets
- Cement and cement-lime plasters
- Concrete substrates

Technical Data

Color	Grey/white
Bulk density, [g/cc]	Approx. 1.5
Walkability, [hrs]	After 24
Mixing proportion	6 to 6.5L water per 25kg

Coverage

2kg - 4.8kg for even substrates [consumption can vary depending on the evenness on the substrate, trowel notch depth and the type of tiles]

Pack	Unit	Unit/Pallet
Grey 25kg	bag	48
White 25kg	bag	48

Storage

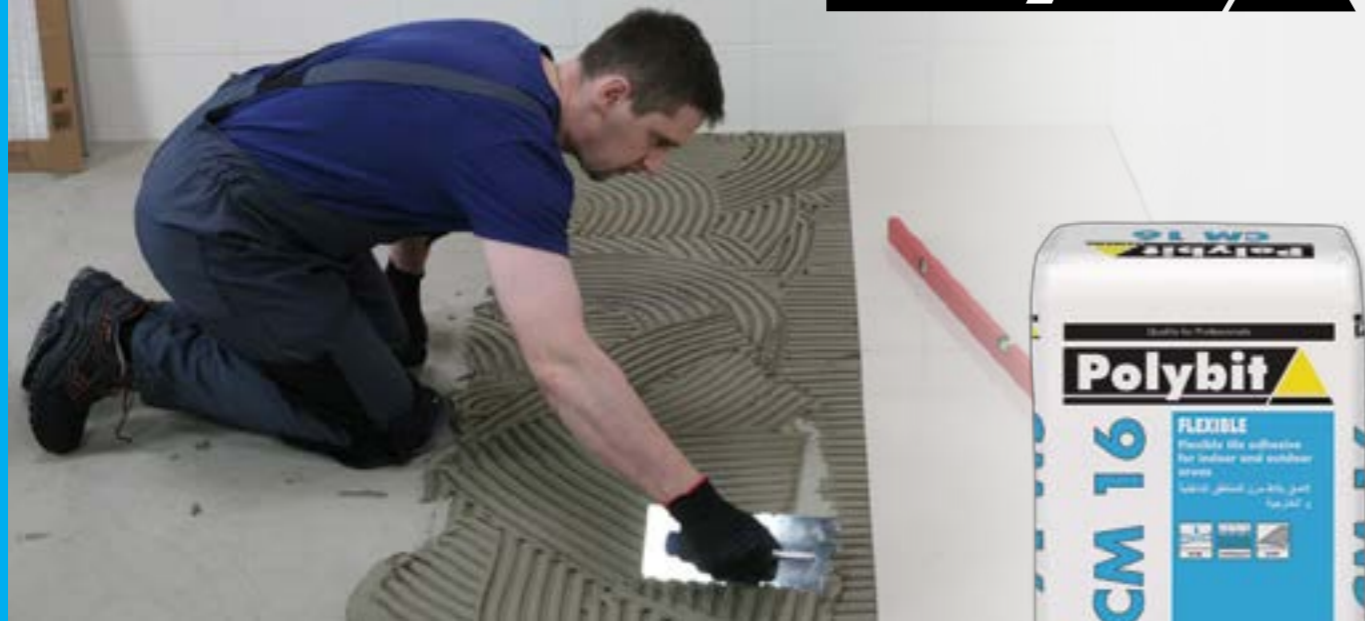
Store on pallets and keep covered in a cool, shaded & dry place.

Shelf Life

12 months



Images used are for illustration purpose only



CM 16

Flexible tile adhesive for indoor and outdoor areas



CE 33

Cement-based joint mortar for 1 to 8mm



CM 16 is a flexible tile adhesive for fixing of ceramic tile, vitrified tile, porcelain tile, mosaic tiles and natural stone in indoor and outdoor areas. It is suitable for swimming pool and wet areas like bathrooms, kitchen and toilets.

Area of Application

- Wet areas e.g. bathrooms, kitchens, toilets
- Swimming pools
- Utility rooms as cellars, storerooms, drying rooms, corridors, stairs, anterooms, living rooms, parking, balconies, terraces

Technical Data

Color	Grey/white
Bulk density, [g/cc]	Approx. 1.5
Open time, [mins]	Approx 20
Mixing proportion	7.5 to 8.5L water per 25kg

Coverage

1.8kg - 4.9kg for even substrates [consumption can vary depending on the evenness on the substrate, trowel notch depth and the type of tiles]

Pack	Unit	Unit/Pallet
Grey 25kg	bag	48
White 25kg	bag	48

Storage

Store on pallets and keep covered in a cool, shaded & dry place.

Shelf Life

12 months



CE 33 Comfort with Polymer Power technology is a cement-based joint mortar suitable for filling joints from 1mm to 8mm. CE 33 Comfort guarantees perfect and durable results.

Area of Application

- For filling joints in floor & wall of ceramic, glass, porcelain & mosaics indoor and outdoor areas (like balcony, low height cladding).
- For narrow and wide joints of 1 to 8 mm.

Technical Data

Density approx.	1.12 kg/ dm ³
Mixing ratios	1.5-1.6 L water at 5kg 6.0-6.4 L water at 20kg

Pack	Unit	Unit/Pallet
5kg	bag/foil	160

Storage

Store in a cool, dry place and keep away from all sources of heat and sunlight.

Shelf Life

24 months for 5kg foil bag and 12 months for 20kg paper bag if stored as per recommendations.





CE 47

Epoxy joint filler for chemical resistant grouting



PATTEX CF 1000

Epoxy resin chemical anchoring system



For permanent, chemical-resistant grouting of ceramic tile coverings, acid-resisting clinker, split tiles and clinker floor tiles. For grouting areas exposed to aggressive substances, e.g. in medicinal baths, dairies, commercial kitchens, battery stores, car washes, breweries, silos, stables, swimming pools, laboratories. Suitable for use indoors, outdoors, in permanently wet and in drinking water areas.

Area of Application

- In medicinal baths, dairies, commercial kitchens, battery stores, car washes, breweries, silos, stables, swimming pools, laboratories
- Suitable for use indoors, outdoors, in permanently wet and in drinking water areas

Technical Data

Base Epoxy resin with mineral fillers and additives
 Fresh mortar density Approx. 1.6 kg/dm³

Pack	Unit	Unit/Pallet
5kg	kit	NA

Storage

Stored in a tightly sealed container, in frost-free, cool and dry conditions at a temperature above 10°C. Use product in opened containers as soon as possible.

Shelf Life

12 months



Images used are for illustration purpose only



Pattex CF 1000 - Hardened 2-component epoxy resin injection mortars are characterized by very good thermal and mechanical properties and an outstanding resistance to chemicals. There is no shrinkage due to hardening. Good compound properties achieve outstanding load values in diamond-drilled holes and larger annular gaps.

Area of Application

- For concrete
- For building works of reconstruction and renovation
- For difficult anchoring in each kind of material

Technical Data

Form Thick viscous liquid
 Installation temperature [°C] 5 - 35
 Compressive strength [N/mm²] > 110

Pack	Unit	Unit/Pallet
585ml	Cartridge	720

Storage

Store on pallets and keep covered in a cool, shaded & dry place.

Shelf Life

18 months



Images used are for illustration purpose only



Premium Quality



POLYSTOP CJ

Internal and external PVC construction joints

NOTES



Polystop CJ is a range of tough yet flexible waterstops which is manufactured using high quality PVC compounds. These are used to provide a watertight seal on all construction joints especially in water retaining structures. Complies to BS 2571 standard requirements.

Area of Application

- Water tanks
- Swimming pools

Technical Data

Colour	Blue
Thickness, [mm]	3 & 4
Width, [mm]	250
Type	Construction joint
Chemical resistance	Resistant
Toxicity	Non toxic

Pack	Unit	Unit/Pallet
250mm x 10m x 3mm	Roll	20
250mm x 10m x 4mm	Roll	20

Storage

Store on pallets and keep covered in a cool, shaded & dry place.

Shelf Life

24 months

Series of horizontal dotted lines for taking notes.

Images used are for illustration purpose only



Your partner:



Henkel Polybit Industries Ltd.
PO Box: 293, Umm Al Quwain, UAE
Phone: +971 (6) 76 70 777; Fax: +971 (6) 76 70 197
Email: henkelpolybit@henkel.com
www.henkelpolybit.com